

# GOING TO THE ZOO



## PLANNING YOUR VISIT



1875 Noble Avenue  
Bridgeport, CT 06610  
203-394-6565

[info@beardsleyzoo.org](mailto:info@beardsleyzoo.org)

## **HOURS OF OPERATION**

**9am-4pm daily**

Closed on Thanksgiving, Christmas and New Year's Day.

Closes at 1pm the day before these holidays,  
with the last ticket sold at noon.

Check our website, [www.beardsleyzoo.org](http://www.beardsleyzoo.org) in case of  
Zoo Closings due to inclement weather.

**WE'RE GOING TO CONNECTICUT'S  
BEARDSLEY ZOO!**

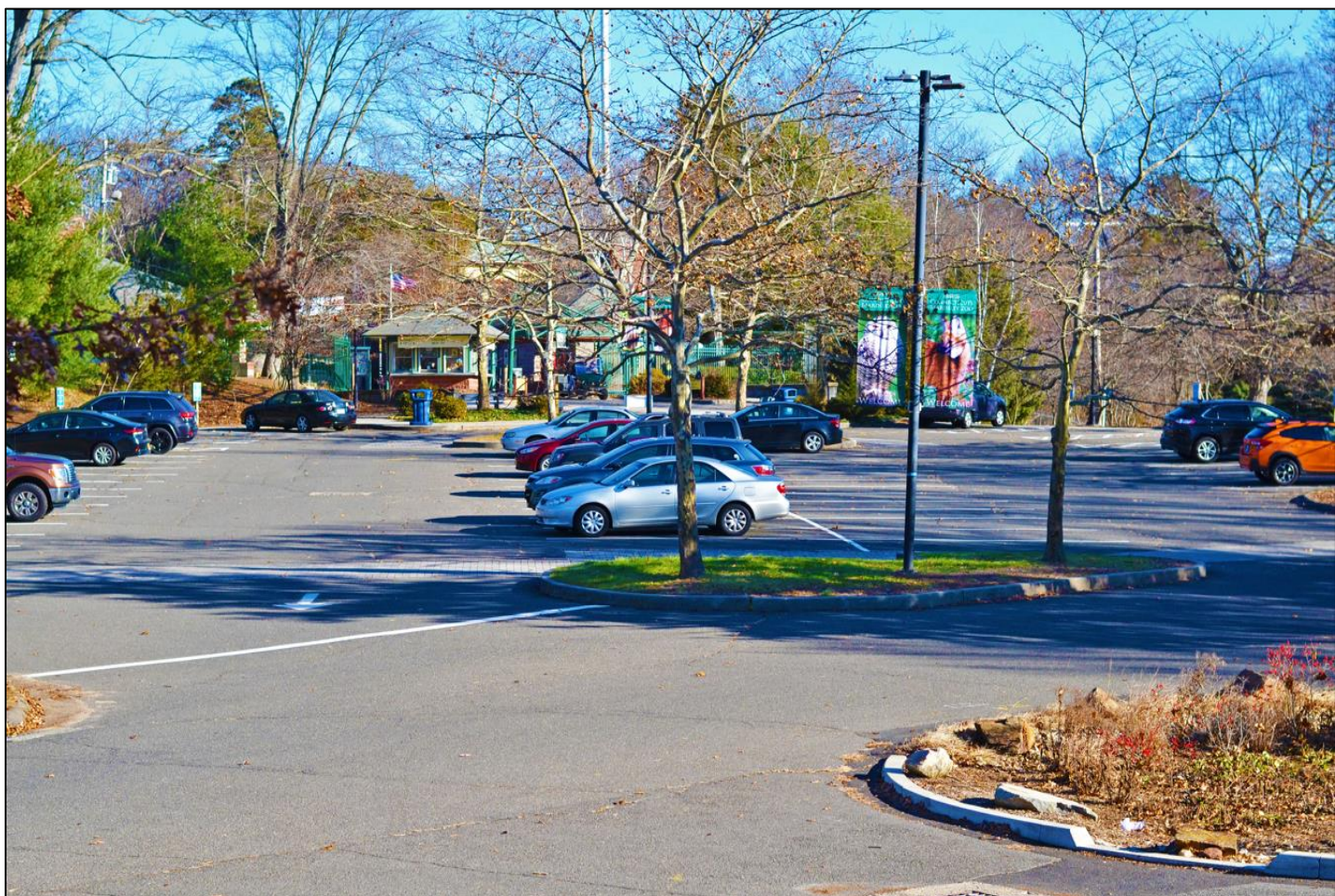
**Once we see the sign in the park,  
we'll know we're almost at the Zoo!**



**Nearby will be a statue of  
James W. Beardsley!**



**We will park when we get to the Zoo's parking lot. We will walk safely with an adult through the parking lot. We will be careful of any cars leaving the Zoo.**



**Accessible Parking is located near the front of the parking lot and will be marked with a sign.**

At the front gate, we will get our tickets to get into the Zoo. We may have to wait in line patiently until it is our turn.



It may be crowded and noisy here, but there are other spaces that are quiet. We can find them on the accessibility map.

**At the Zoo, there will be many people who can help.**

**When we have questions, we can ask a Zoo Staff member or Volunteer. Just look for the logo on their shirts!**



**Zoo Staff and Volunteers will have different colored shirts, but all have the same tiger logo.**

If we can't find our family or friends,  
we should look for someone to talk to  
for help.

At the front gate,



we can get a map of the Zoo



**When we pass the front gate, there are  
bathrooms.**



**There are more bathrooms by the Café  
and in the Carousel, too.**







(Café bathrooms above.)





(Carousel bathrooms above.)

**If we get hungry, we can get a snack at  
the Peacock Café!**



If we want to ride the carousel, we will have to buy a ticket.

The ride may have music and we will need to hold on with both hands!

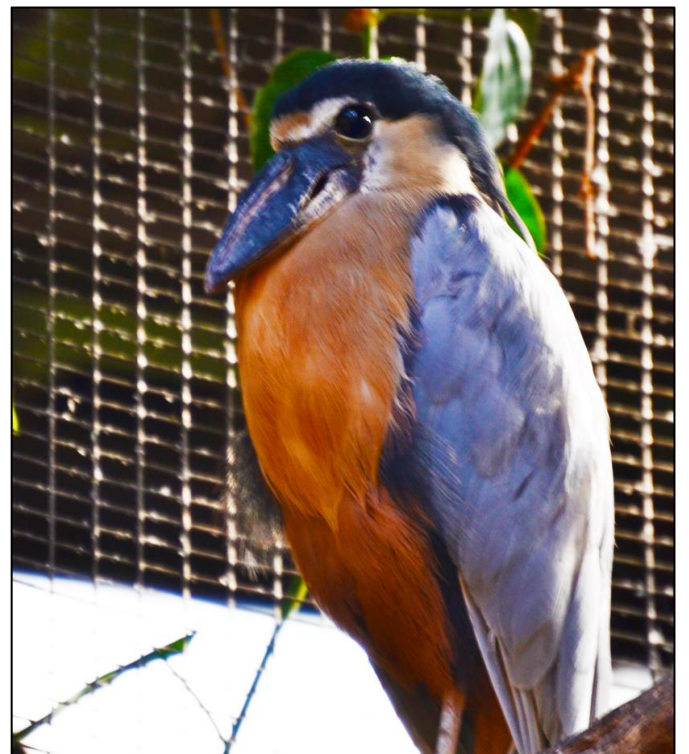
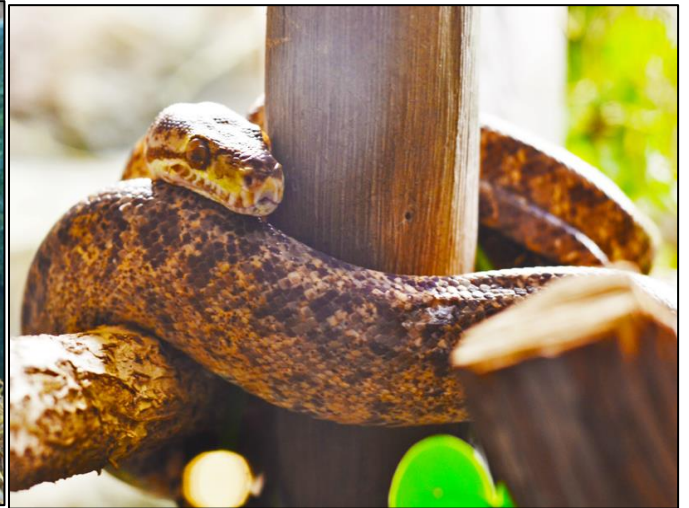


Carousel Ticket Booth



Carousel

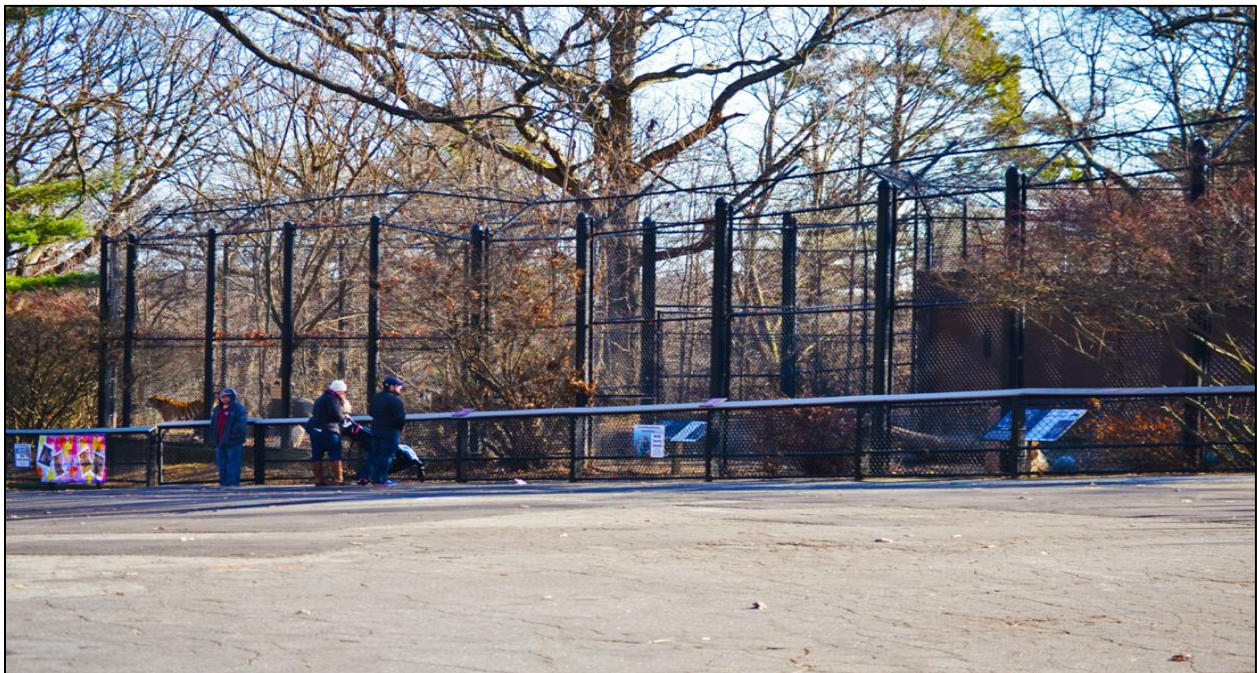
**Inside the Zoo, we will see lots of animals including mammals, birds and reptiles!**



**Be on the lookout for some ORANGE PAWPRINTS to guide your way around the Zoo.**



**Let's follow the pawprints to go see the tigers!**



**An adult Amur tiger can weigh  
between 400-650 pounds!**



**How many tigers do you see  
in each side of the habitat?**

**Left side: \_\_\_\_\_ Right side: \_\_\_\_\_**

# We can explore the Rainforest Building!



**The Rainforest Building opens 10:30am  
and closes at 3:30pm.**

**PLEASE, NO STROLLERS INSIDE THE  
BUILDING**

**When we first head inside the Rainforest building, we might notice the lights are dimmed. That is normal for both guests and the animals.**

**We also might notice that the building has a smell. The animals like the smell, but it may not smell good to people.**

**How many monkeys do you see?**

---

**What colors are the frogs?**

---

---

---



**As you leave the building, please be careful because there may be some feathered friends on the other side of the door.**



**But don't worry, they won't bother you if you don't bother them.**

**We can visit the Farmyard!**

**In the Farmyard, there is a barn.**

**Remember, it might smell strongly,  
like a Farmyard.**



**There are many animals in the  
Farmyard. There are ducks, chickens,  
swans, sheep, pigs and goats here!**

**Though they are cute,  
WE CAN'T FEED THE ANIMALS.**

**Instead, we can tell each animal our  
favorite thing about it.**



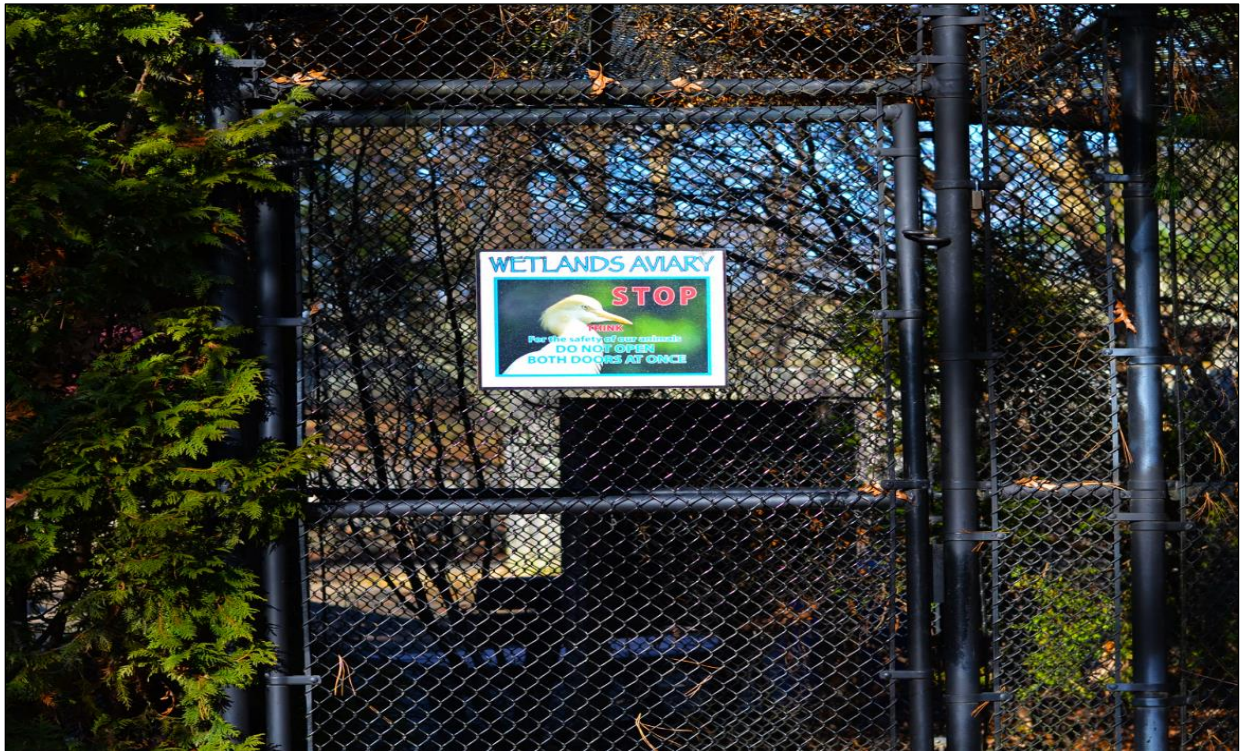
**Let's carefully walk over to the Wetlands, near the Tigers.**



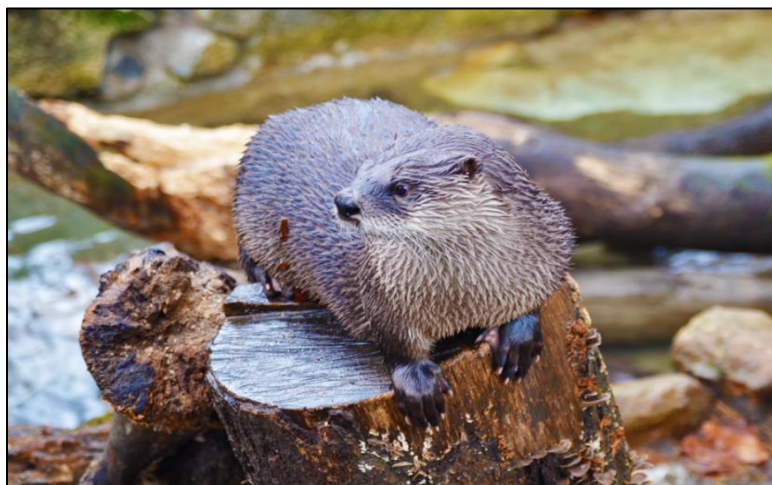
**There are Bald eagles, alligators, cranes and Grey fox that live in this part of the Zoo. The cranes can be very loud if they start calling.**



There is an Aviary that we can walk through, too. We have to be careful and only open one door at a time when we enter or exit the Aviary to make sure the birds inside don't escape.



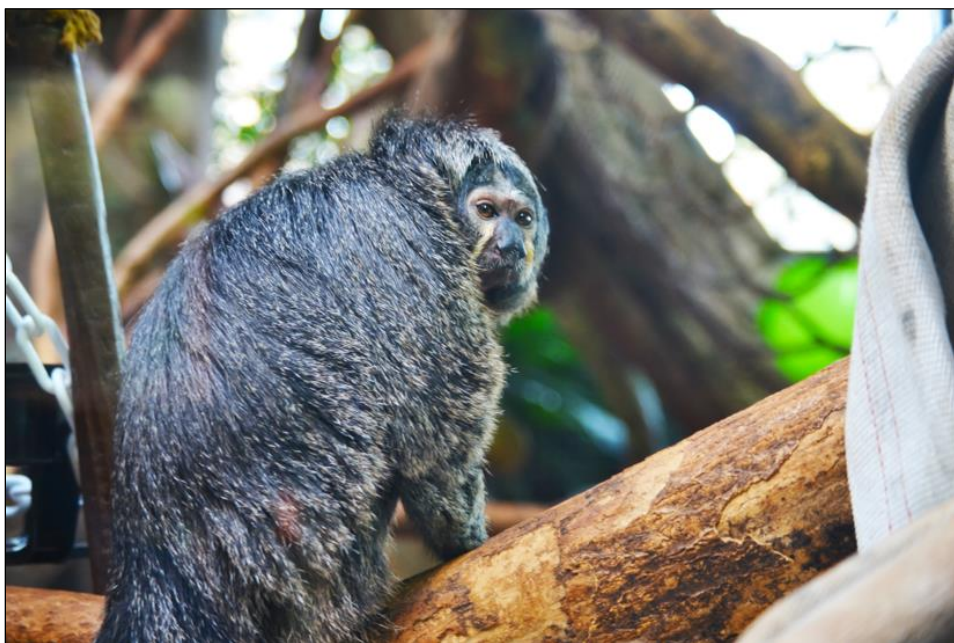
River otters live in the Aviary, too!



How many otters did you see? \_\_\_\_\_

**Around the rest of the Zoo, there are  
wolves, bison, anteaters, Red pandas  
and more!**

**Some animals like the cold, others like  
it when it's warm.**



Let's go see the Red pandas!



How many did you see? \_\_\_\_\_

**Which animals did you see today  
at the Zoo? Circle your favorites  
below (if it isn't listed, add it here)**

---

**TIGERS**

**DART FROGS**

**SLOTHS**

**SNAKES**

**RED PANDAS**

**SHEEP**

**MONKEYS**

**TURTLES**

**WOLVES**

**BISON**

**GOING TO THE ZOO IS FUN!**